



HDN106 LED LUMINAIRES

..... *For Harsh & Hazardous Environments*





HDN106N

LED Floodlight

The **HDN106N** is an outstanding luminaire, with a variety of beam options to suit any industrial application.

Up to four modules can be interlinked to increase the output without impacting on the product performance, and provide an effective replacement for conventional HID floodlights, up to 250W.



CE

International Approvals

Mounting Options

Floodlight. Pendant. Bulkhead. High Bay. Pole/Column. Road Lighting.

Standard Specification

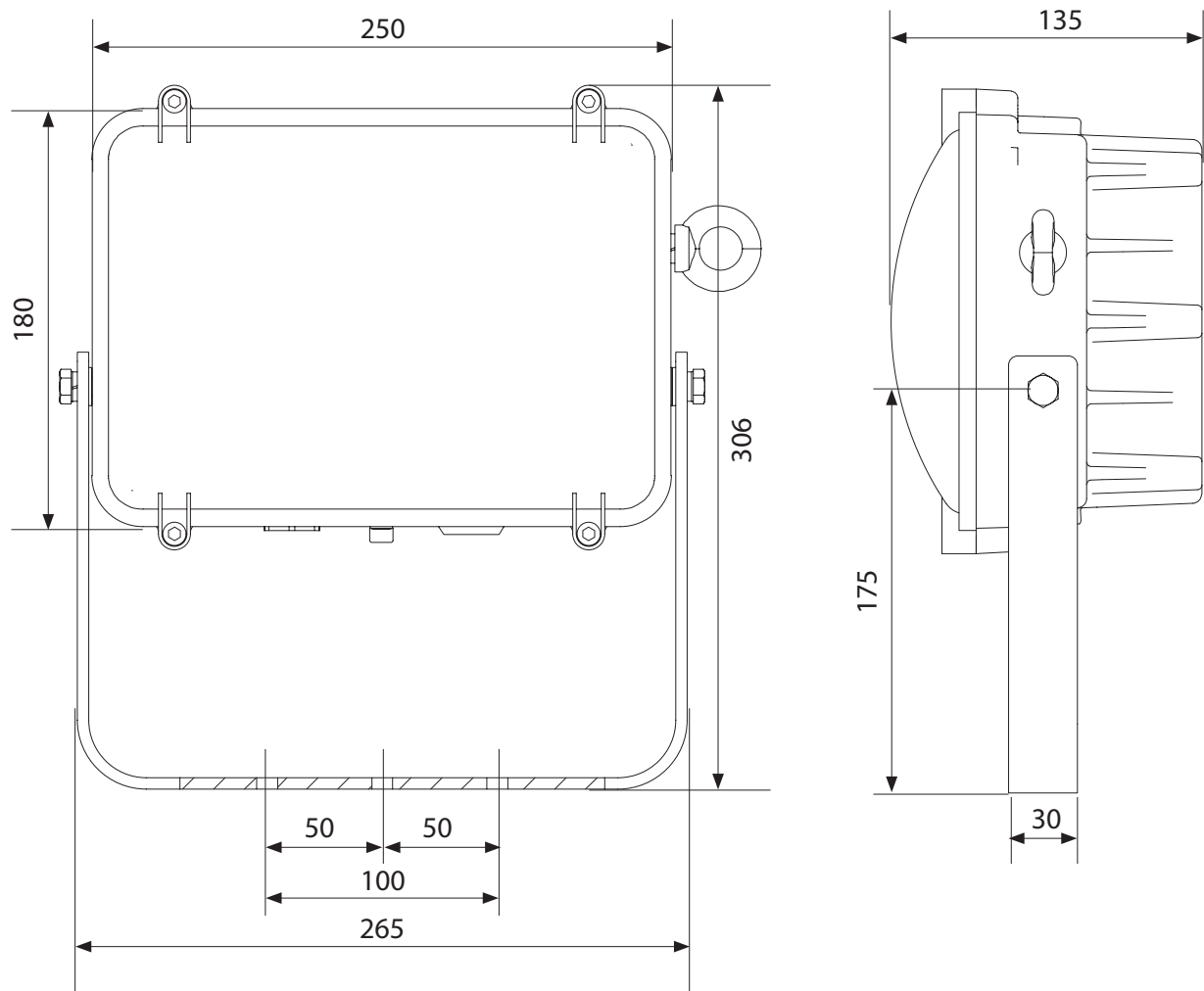
HDN106N LED Floodlight

Ambient °C	-20 to +55
Enclosure	LM6 Aluminium with epoxy powder finish (RAL 7035), and Polycarbonate diffuser
Entry	2 x M20 cable entries
Termination	3 core 4mm ² max. conductor with looping
Installation	Stirrup mounting bracket
Control Gear	Electronic Driver
Colour Temperature (CCT)	Refer to Ordering Matrix
Maintenance	M8 Hex Head and M6 SKT Head
Ingress Protection	IP66/67
Surge Protection	4kV line to line, 6kV line to earth
Electrical Supply	Refer to Ordering Matrix

Features

- ◆ **Instant on** crisp white light output
- ◆ Highly **Energy Efficient**
- ◆ **Modular design** allowing up to four interlinked luminaires, each providing a delivered output > 5000lm
- ◆ **80,000** maintenance free hours at 25°C
- ◆ **Lower power consumption** than HID lamps
- ◆ **Lightweight** (6kg per module) lighting solution

HDN 106N						
Version	Voltage	Beam Pattern	Mount	Light (CCT)	Cable Entries	Other Options
<div>0 – 24 LEDs</div> <div>1 – 48 LEDs</div> <div>2 – 96 LEDs</div> <div>3 – 144 LEDs</div> <div>4 – 192 LEDs</div>	<div>H – 100-254V AC</div> <div>L – 18-54V AC/DC</div>	<div>N – Narrow</div> <div>M – Medium</div> <div>W – Wide</div> <div>X – Extra Wide</div>	<div>H – Horizontal Mount [single unit]</div> <div>V – Vertical Mount [multiple units]</div> <div>C – Ceiling Mount</div>	<div>W – Cool White (5700K)</div> <div>X – Warm White (3000K)</div>	<div>0 – M20</div> <div>5 – M25</div>	<div>04 – RAL 7035 (Grey)</div> <div>FG – Glass front cover</div>
Typical ordering reference:						HDN106N1HWHW004





HDN106NE

LED Floodlight

The **HDN106NE** is a distinctive Emergency LED luminaire allowing up to four modules interlinked, providing an effective and efficient replacement to traditional battery-backed luminaires.

With a wide ambient range and multiple beam options available, this is a truly global industrial solution for any application where Emergency lighting is required for a period of 90mins or 3hrs.



CE

International Approvals

Mounting Options

Floodlight. Pendant. Bulkhead. High Bay. Pole/Column. Road Lighting.

Standard Specification

HDN106NE LED Floodlight

Ambient °C	-20 to +55
Enclosure	LM6 Aluminium with epoxy powder finish (RAL 7035), and Polycarbonate diffuser
Entry	2 x M20 cable entries
Termination	3 core 4mm ² max. conductor with looping
Installation	Stirrup mounting bracket
Control Gear	Electronic Driver
Colour Temperature (CCT)	Refer to Ordering Matrix
Maintenance	M8 Hex Head and M6 SKT Head
Ingress Protection	IP66/67
Surge Protection	4kV line to line, 6kV line to earth
Electrical Supply	Refer to Ordering Matrix

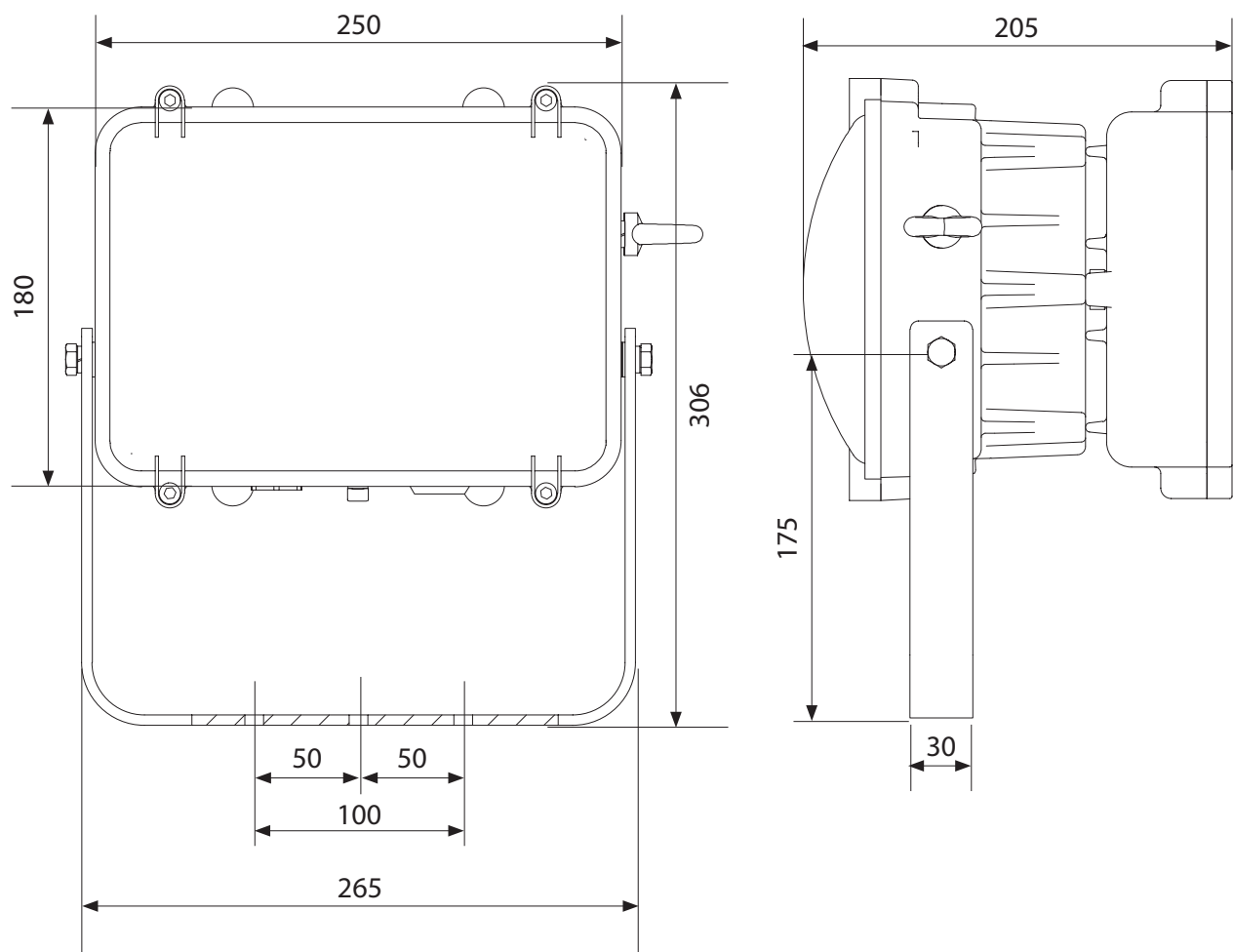
Features

- ◆ **Instant on** crisp white light output
- ◆ Highly **Energy Efficient**
- ◆ **Modular design** allowing up to four interlinked luminaires, each providing a delivered output > 5000lm
- ◆ **80,000** maintenance free hours at 25°C
- ◆ **Lower power consumption** than HID lamps
- ◆ **Lightweight** (9kg per module) lighting solution

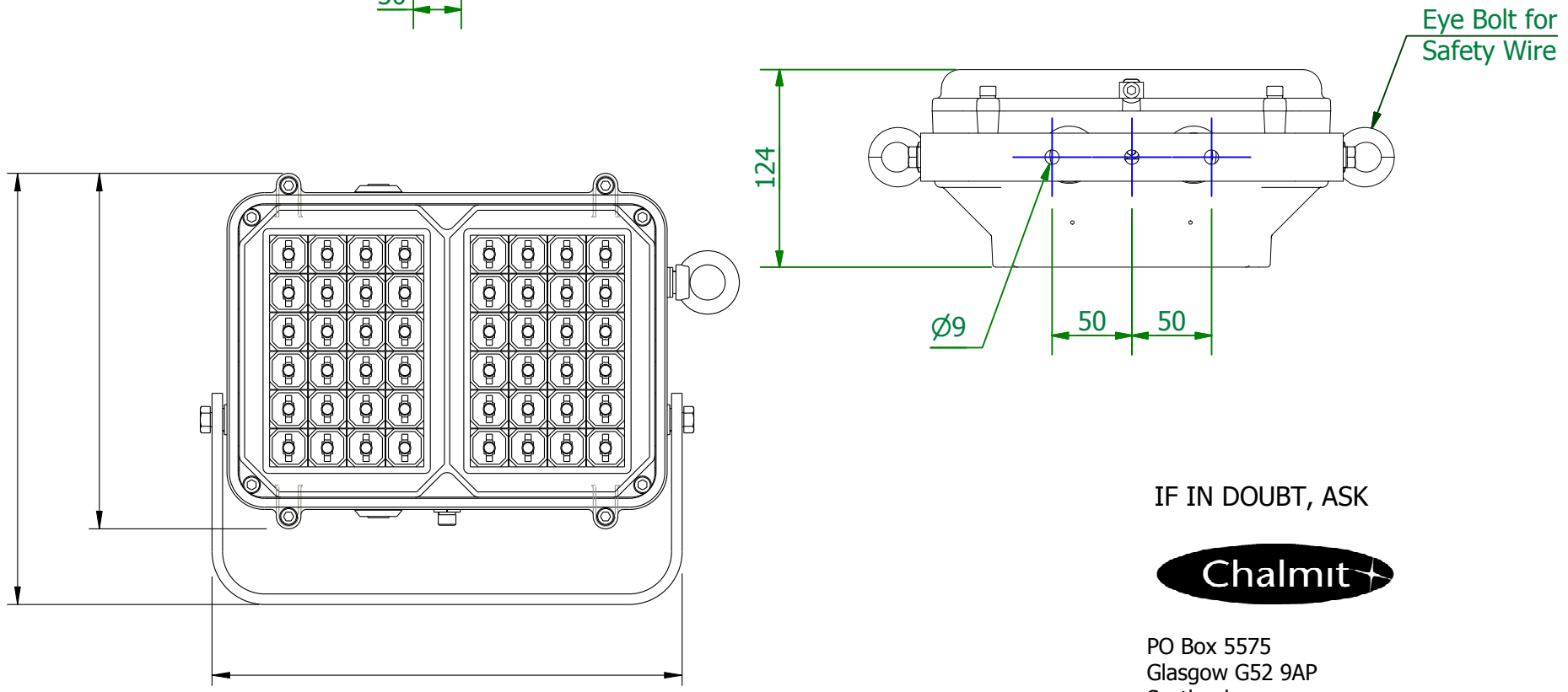
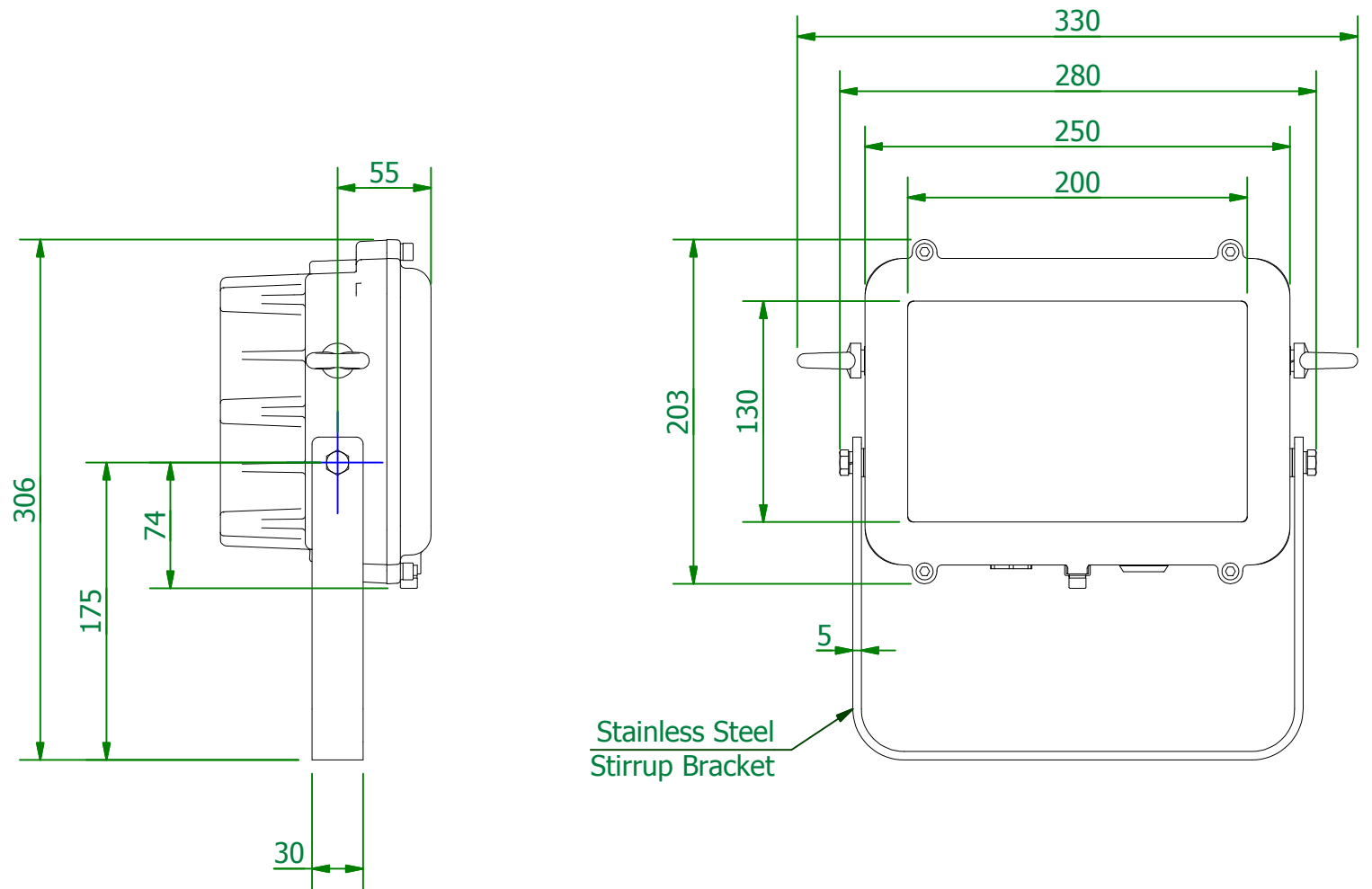
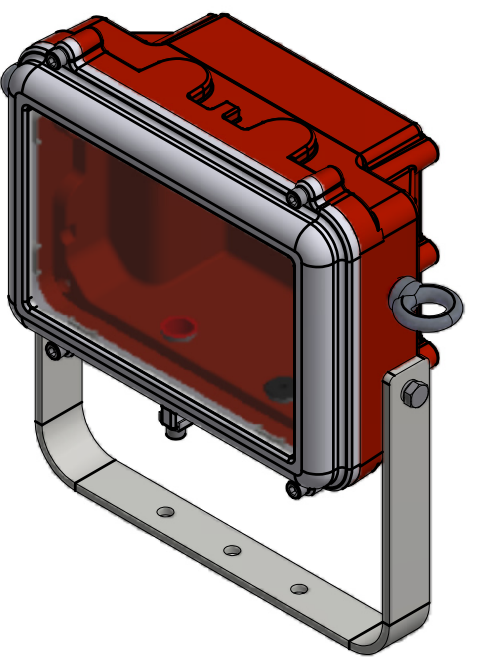
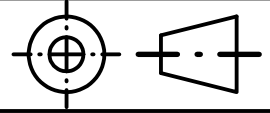
HDN 106N				
Version*	Beam Pattern	Light (CCT)	Cable Entries	Other Options
E – EM (48 LEDs)	N – Narrow	W – Cool White (5700K)	0 – M20	04 – RAL 7035 (Grey)
ES – EM/Std (96 LEDs)	M – Medium	X – Warm White (3000K)	5 – M25	FG – Glass front cover
SES – Std/EM/Std (144 LEDs)	W – Wide			
	X – Extra Wide			

*For alternative arrangements please contact Chalmit Internal Sales.

Typical ordering reference: HDN206NEMW004



THIS DRAWING IS THE PROPERTY OF HUBBELL LTD AND CONTAINS
CONFIDENTIAL AND COPYRIGHTED INFORMATION. ANY COPYING, USE
OR DISCLOSURE OF THIS DRAWING, OR THE INFORMATION THEREIN,
WITHOUT PERMISSION IS STRICTLY FORBIDDEN.

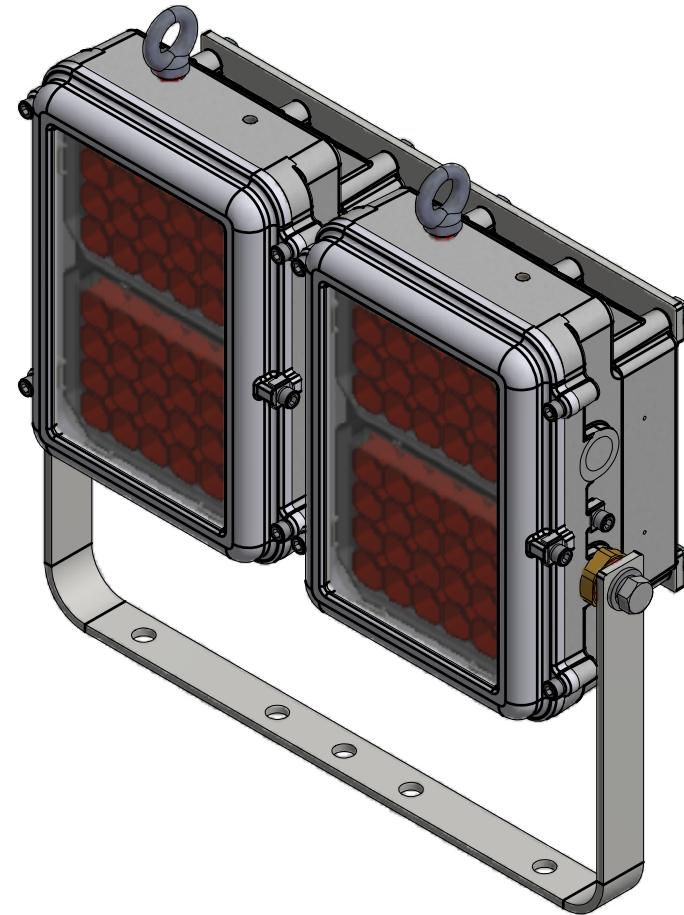
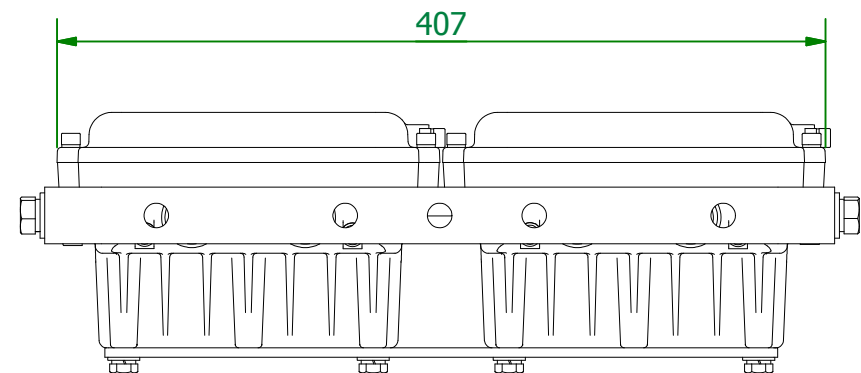
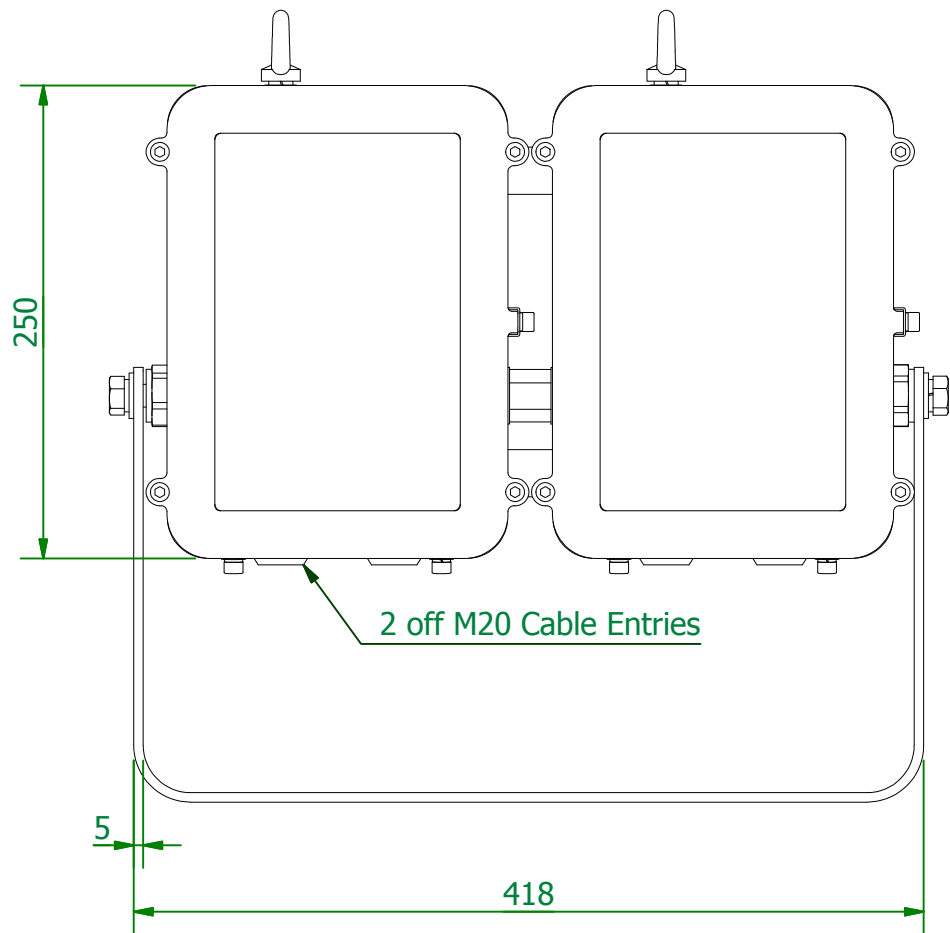
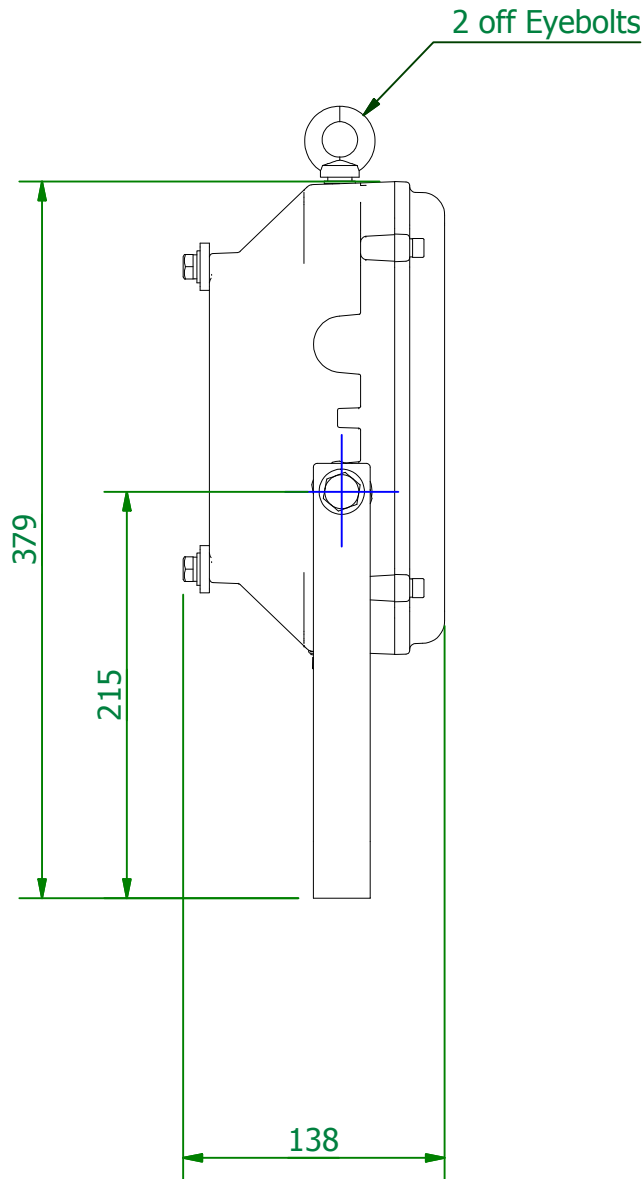
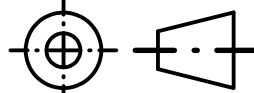


IF IN DOUBT, ASK



PO Box 5575
Glasgow G52 9AP
Scotland
Tel: +44 (0) 141 882 5555
Fax: +44 (0) 141 883 3704
www.chalmit.com

THIS DRAWING IS THE PROPERTY OF HUBBELL LTD AND CONTAINS
CONFIDENTIAL AND COPYRIGHTED INFORMATION. ANY COPYING, USE
OR DISCLOSURE OF THIS DRAWING, OR THE INFORMATION THEREIN,
WITHOUT PERMISSION IS STRICTLY FORBIDDEN.

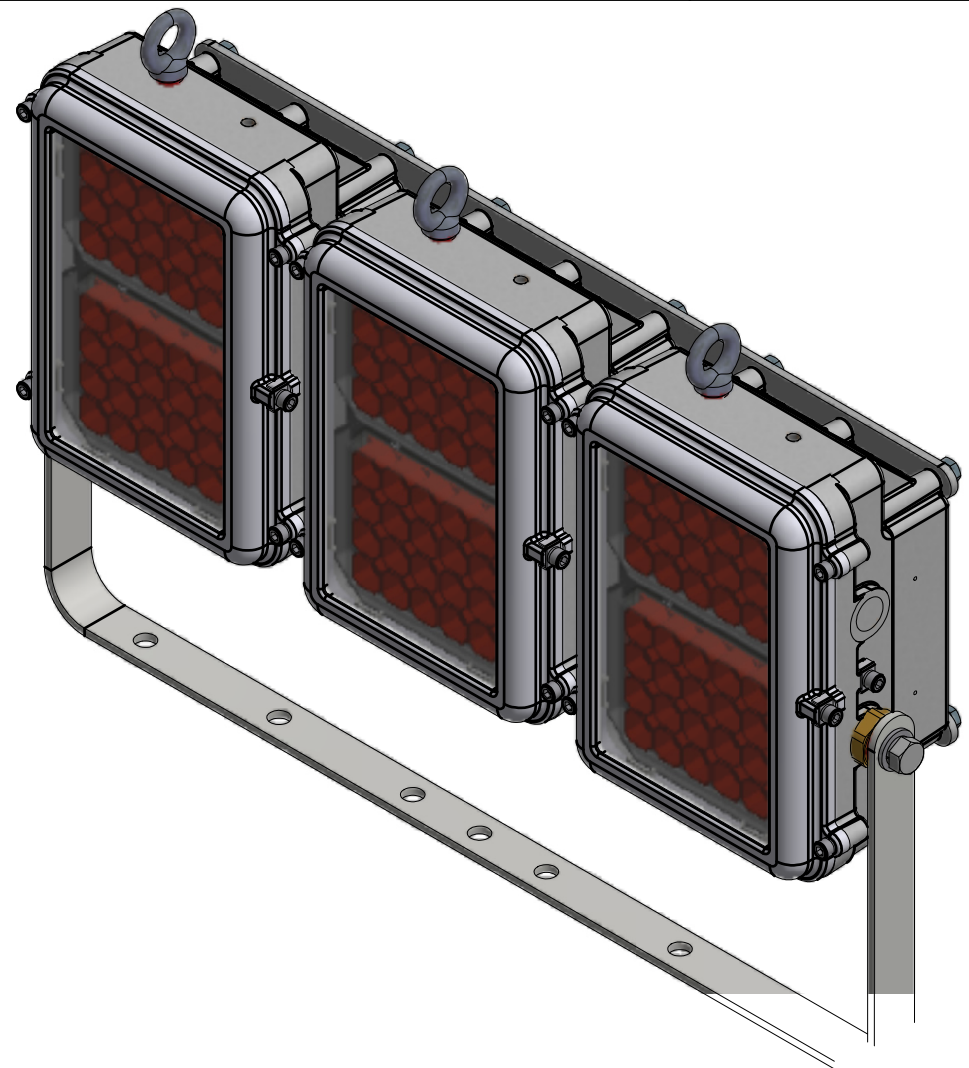
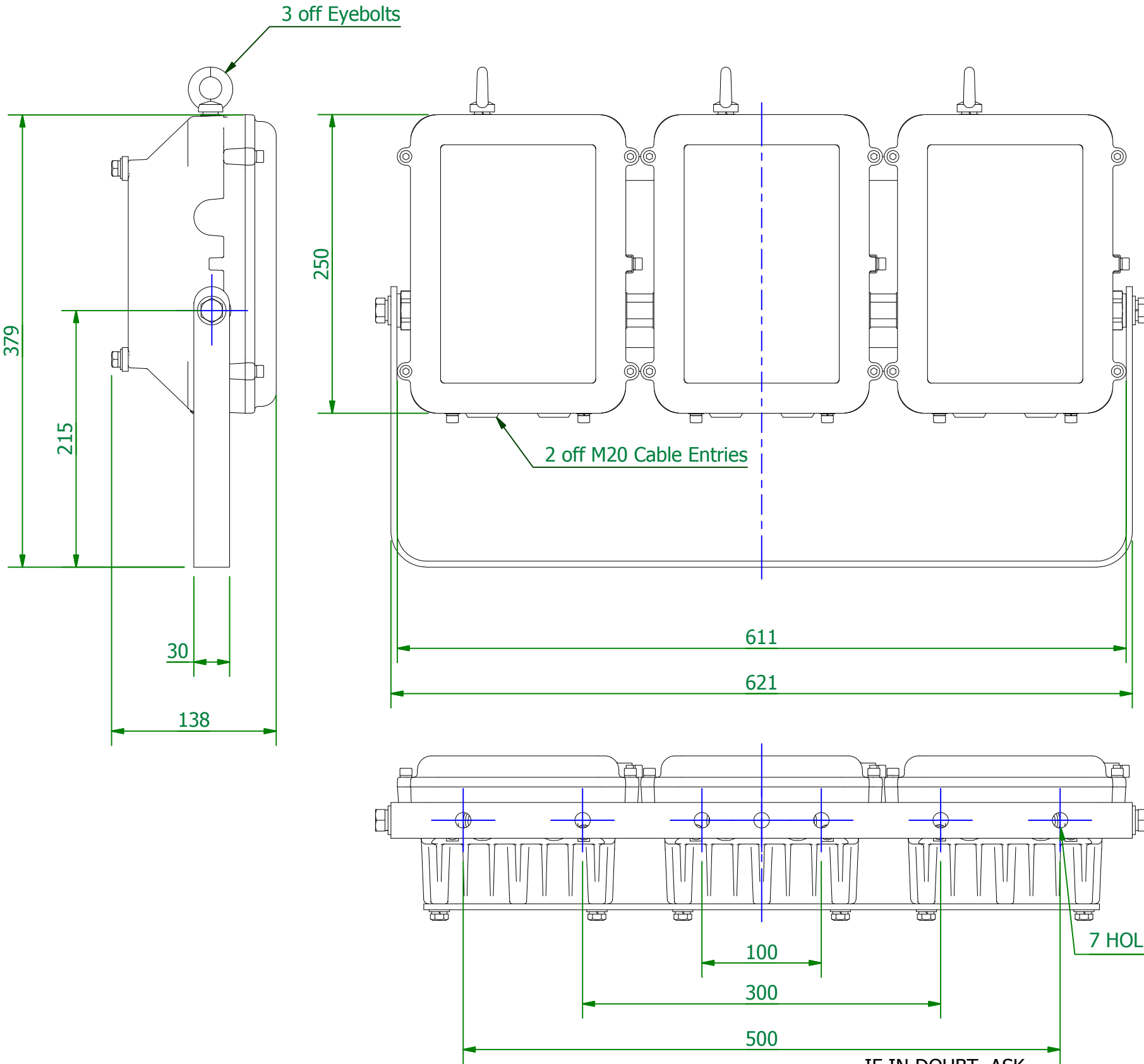
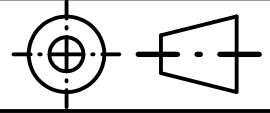


IF IN DOUBT, ASK



PO Box 5575
Glasgow G52 9AP
Scotland
Tel: +44 (0) 141 882 5555
Fax: +44 (0) 141 883 3704
www.chalmit.com

THIS DRAWING IS THE PROPERTY OF HUBBELL LTD AND CONTAINS
CONFIDENTIAL AND COPYRIGHTED INFORMATION. ANY COPYING, USE
OR DISCLOSURE OF THIS DRAWING, OR THE INFORMATION THEREIN,
WITHOUT PERMISSION IS STRICTLY FORBIDDEN.



IF IN DOUBT, ASK

ORIGINAL ISSUE



PO Box 5575
Glasgow G52 9AP
Scotland
Tel: +44 (0) 141 882 5555
Fax: +44 (0) 141 883 3704
www.chalmit.com