



HDN106NE

LED Floodlight

The **HDN106NE** is a distinctive Emergency LED luminaire allowing up to three modules interlinked, providing an effective and efficient replacement to traditional battery-backed luminaires.

With a wide ambient range and multiple beam options available, this is a truly global industrial solution for any application where Emergency lighting is required for a period of 90mins or 3hrs.



UK CE

International Approvals

Mounting Options

Floodlight. Pendant. Bulkhead. High Bay. Pole/Column. Road Lighting.

Standard Specification

HDN106NE LED Floodlight

Ambient °C	-20 to +55
Enclosure	LM6 Aluminium with epoxy powder finish (RAL 7035) and Polycarbonate diffuser
Entry	2 x M20 cable entries
Termination	4 core 4mm ² max. conductor with looping
Installation	Stirrup mounting bracket
Control Gear	Electronic Driver
Colour Temperature (CCT)	Refer to Ordering Matrix
Colour Rendering Index (Ra)	>70
Maintenance	M8 Hex Head and M6 SKT Head
Emergency Duration	90mins (75%) or 3hrs (37.5%)
Ingress Protection	IP66/67 to EN 60529
Surge Protection	4kV line to line, 6kV line to earth
Electrical Supply	100-254V AC 50/60Hz

Features

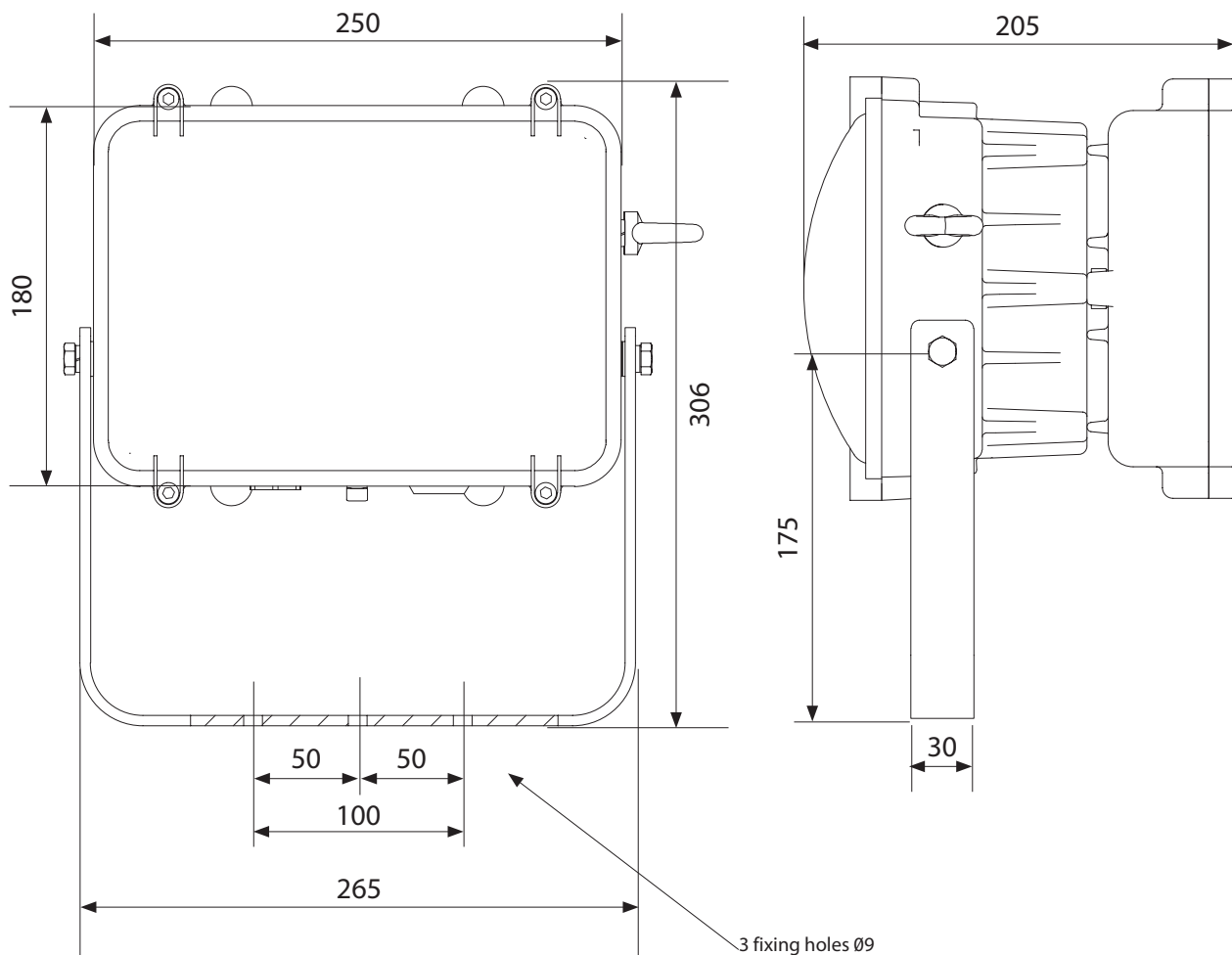
- ◆ Highly **Energy Efficient**
- ◆ **Modular design** allowing up to three interlinked luminaires, each providing a delivered output > 5500lm
- ◆ **Instant on** crisp white light output
- ◆ **Lower power consumption** than HID lamps
- ◆ **Lightweight** (9kg per Emergency module) lighting solution
- ◆ **>150,000 maintenance free hours** at 25°C (L70)

HDL106N					
Version ¹	Beam Pattern ²	Light (CCT)	Cable Entries	Material & Paint	Options
E – EM (48 LEDs) [62W] ES – EM/Std (96 LEDs) [105W] EE – EM/EM (96 LEDs) [122W] SES – Std/EM/Std (144 LEDs) [149W] ESE – EM/Std/EM (144 LEDs) [165W] EEE – EM/EM/EM (144 LEDs) [184W]	N – Narrow (6565lm) M – Medium (5882lm) W – Wide (5624lm) X – Extra Wide (5547lm)	W – Cool White (5000K) X – Warm White (3000K)	0 – M20 5 – M25 0BP – M20 Brass Nickel Plated Plugs 5BP – M25 Brass Nickel Plated Plugs	04 – RAL 7035 (Grey)	FG – Glass front cover ³ BNI – Batteries Not Included ⁴ RCG – Rapid Connection Gland for single entry ⁵ RCGL – Rapid Connection Glands for looping ⁵

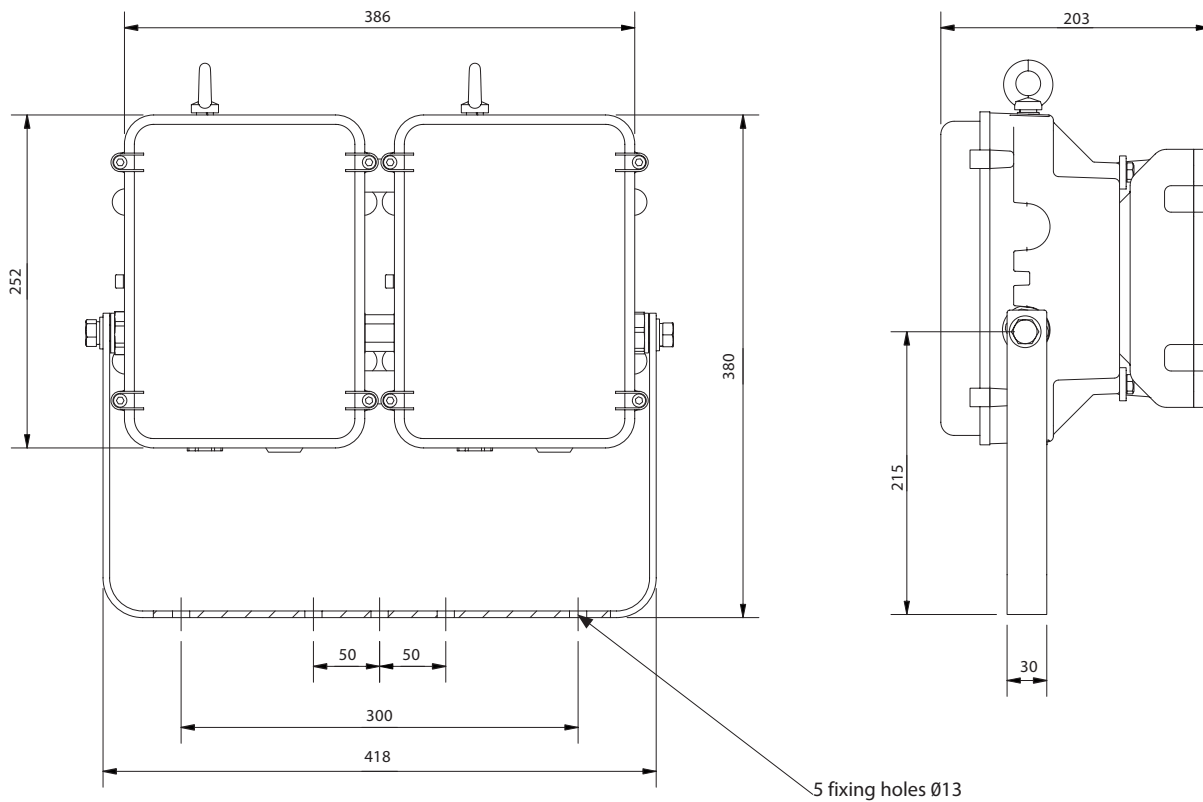
¹Power consumption provided in square brackets
²Delivered outputs based on single module 48LED version
³Standard Cover Front Clear Polycarbonate (No Abbreviation required)
⁴Battery assembly HDLAL11131S to be ordered separately when required by site. Qty 1 HDLAL11131S assembly per emergency unit e.g. HDL106NESE*** requires Qty 2 HDLAL11131S.
⁵Factory fitted with 4pin Rapid Connection Gland entry only. Purchaser to supply appropriately sized RCG body as determined by site specific cable requirement.

Typical ordering reference: **HDL106NESMW004FG**

Single unit (48 LEDs)



Double unit (96 LEDs)



Triple unit (144 LEDs)

